



# Environmental Public Health Tracking In New York State

**Neil Muscatiello**  
**February 12, 2015**

- **EPHT Background & History**
- **NYS EPHT**
- **Public Health Actions**
- **Partnerships and Collaborations**
- **Future Directions**

# EPHT Background and History

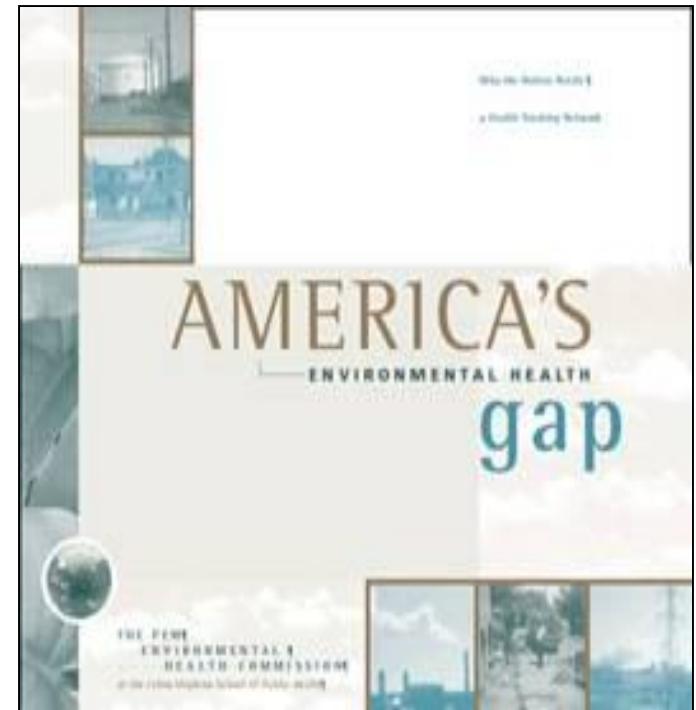


# What is EPHT?

- The ongoing collection, integration, analysis, and interpretation of data about environmental hazards, exposure to environmental hazards, and human health effects potentially related to exposure to environmental hazards.
- A tracking network must effectively disseminate information learned from these data to guide public health action.

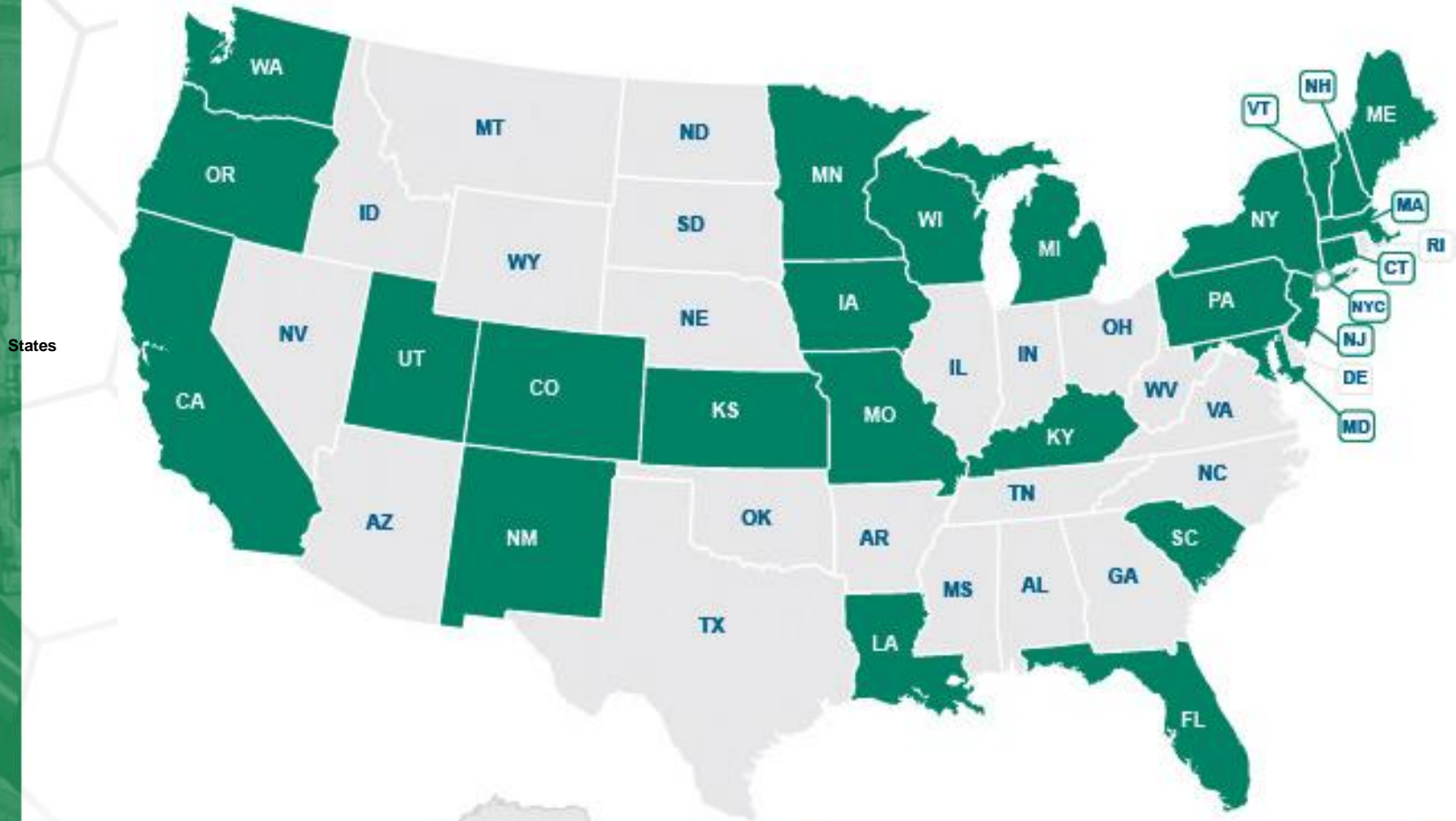
# History

- In 2000, the Pew Environmental Health Commission detailed an "environmental health gap," a lack of basic information needed to document links between environmental hazards and chronic disease.





# Current EPHT grantees



**MAP LEGEND**

-  National Tracking Network Grantee (State)
-  National Tracking Network Grantee (City)

August 2014



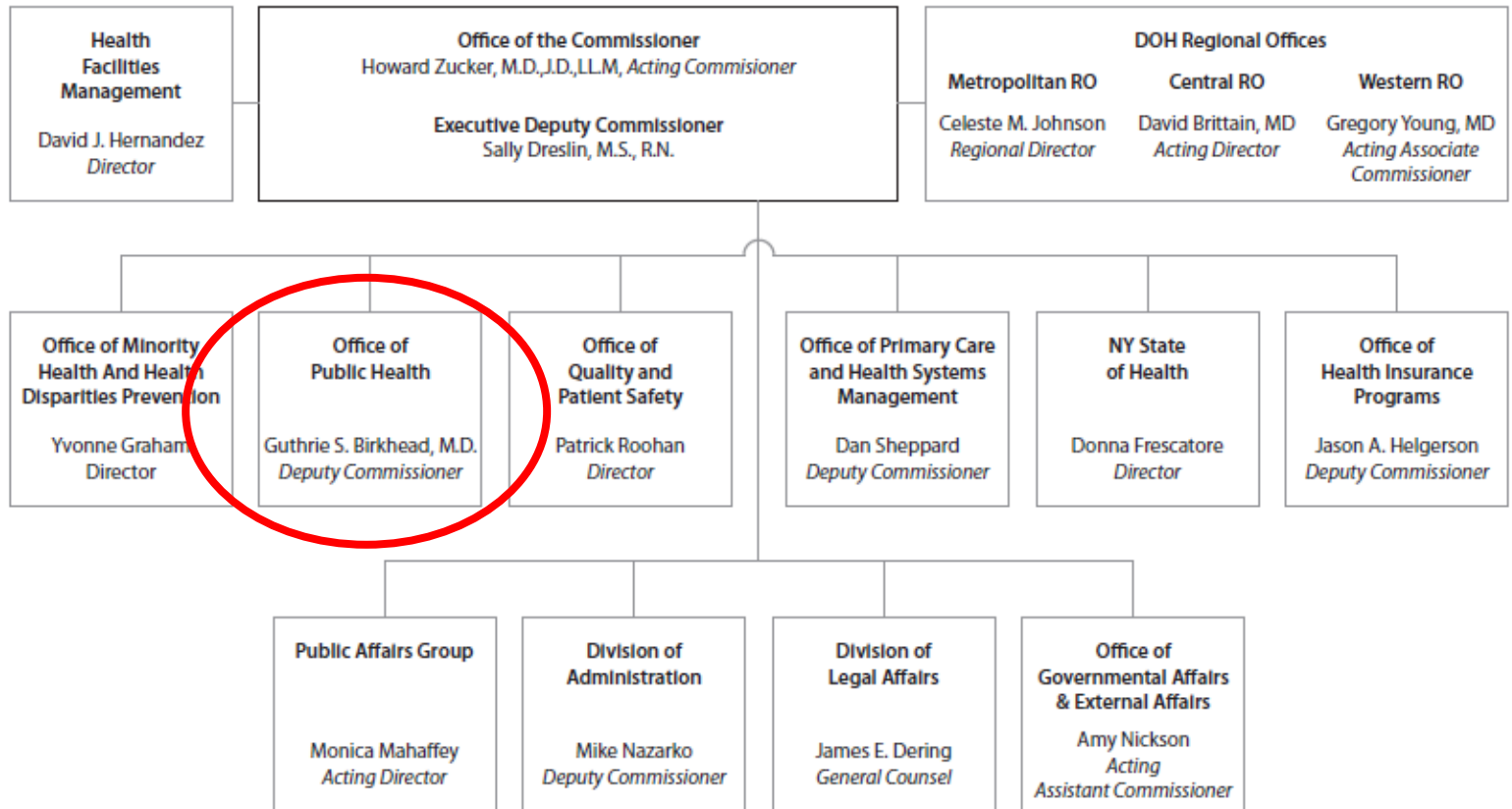
# NYS EPHT





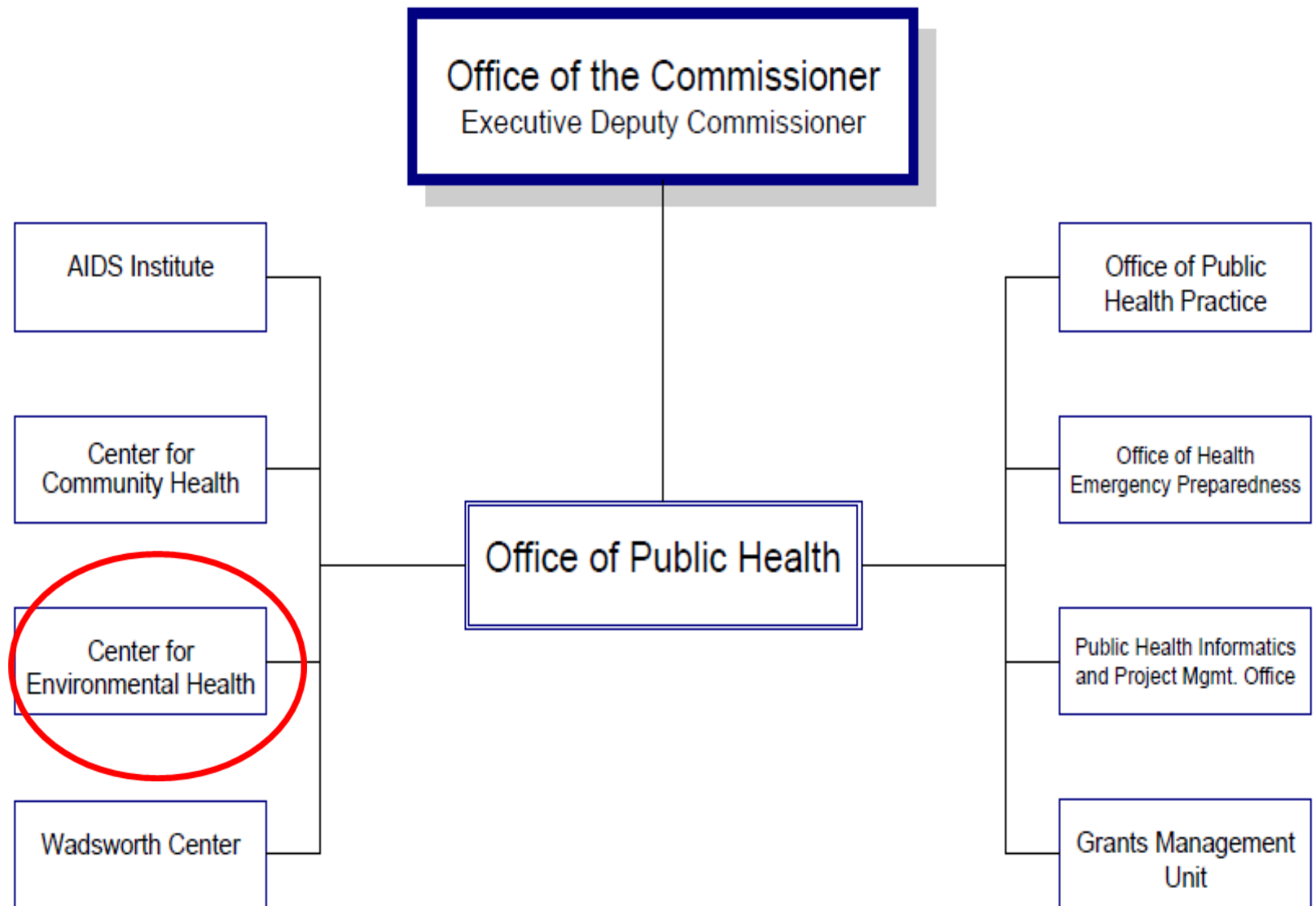
# Department of Health

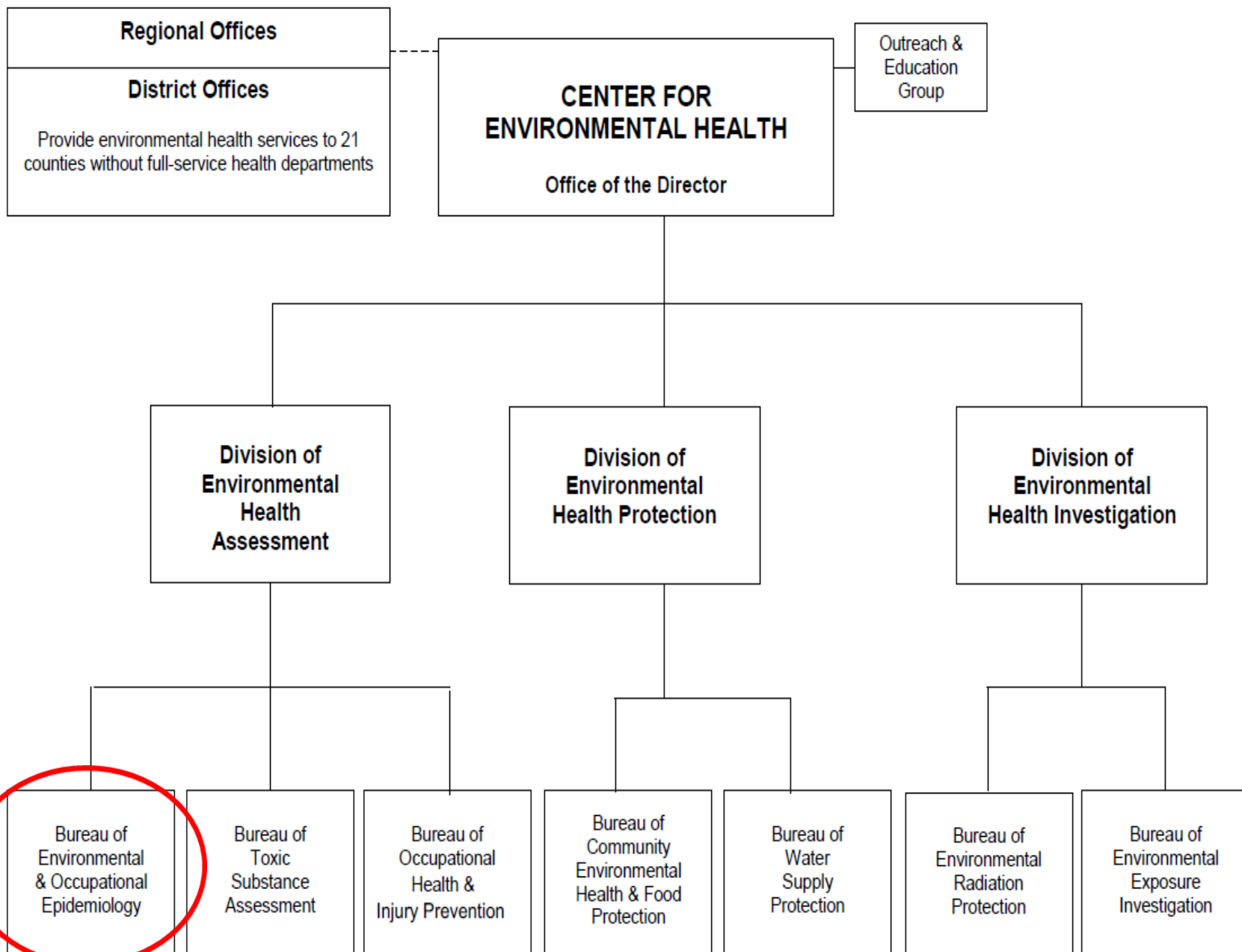
December 2014





# Organization of Public Health Programs





# EPHT in NYS

- Original funding in 2002 as capacity building/demonstration project
- Continuing funding in 2006 with primary objective to build/implement NYS EPHTN and provide data to assist in building national network
- Continuing funding in 2011 & 2014 to maintain & enhance sustainability of the NYS EPHTN

# EPHT in NYS

- Funding provides staff and resources
- Maintaining EPHT portals and providing NCDMs to CDC
  - 3-tiered system
- Enhancing surveillance capacity
  - Improving reporting
  - Analysis tools
  - Data linkage and visualization
- Collaborating with partners
  - Academic partners
  - Data stewards
  - Other grantees, federal/state agencies, etc.

# NYS EPHT 3-tiered system

**Data and Tools**

	<b>Features</b>	<b>Access</b>	<b>Purpose</b>
<b>Tier 1</b>	<ul style="list-style-type: none"> <li>• Individual level data</li> <li>• Statistical tools</li> <li>• Mapping tools</li> </ul>	Researchers and project staff in CEH	Research and Surveillance
<b>Tier 2</b>	<ul style="list-style-type: none"> <li>• Finer geographic resolution at sub-county level</li> <li>• Data query tools</li> <li>• Query based data displays including map and charts</li> </ul>	Role based access to public health professionals  Access determined by program areas/data owners	Surveillance
<b>Tier 3</b>	<ul style="list-style-type: none"> <li>• County level data and display</li> <li>• Simple data queries, maps, charts, and tables</li> <li>• Public health message</li> </ul>	Open access	Outreach

**Background Information and Outreach**

# Key Datasets

- Health Outcome: Vital Records, Hospital Discharge/ED Data, Disease Registries
  - Other
    - Medicaid?
    - Newborn Screening?
    - School Health/Early Intervention Programs?
- Exposure: Childhood blood lead
  - Other
    - Biomonitoring?
    - Heavy metals registry?
- Hazard: Ambient air pollution, drinking water quality (community water systems), radon, hazardous releases




# NYS EPHT Portal

OCRC | Occupational and x OCRC | Occupational and x www.occupationalcancer. x www.occupationalcancer. x Environmental Public Hea x


← → ↻ 🏠 [https://apps.health.ny.gov/statistics/environmental/public\\_health\\_tracking/tracker/](https://apps.health.ny.gov/statistics/environmental/public_health_tracking/tracker/)

Apps EPHT – DEVOld EPHT – DEVNew EPHT - EVAL EPHT – PROD (EPH ... Dickerman ScholarOne Manusc...

 Services News Government

**Department of Health**  
Information for a Healthy New York

You are Here: [Home Page](#) > [Environmental Public Health Tracking](#) > Environmental Public Health Tracker

 Environmental Public Health Tracker

## Environmental Public Health Tracker

Use this site to view maps, charts and tables of select environmental health data and learn more about environmental health topics. These health effects were selected because their occurrence has been shown to be related to environmental hazards. Environmental hazard data also will be added to provide greater insight into environmental health in New York State.

Some of these data are shared on the national [Environmental Public Health Tracking Network](#). The Network is an effort led by the Centers for Disease Control and Prevention to share data and analyze trends in environmental health across the nation. It is intended to provide better public access to environmental health information and support research, programs and policies that may help protect our communities.

### View Data

- [Air Pollution](#)
- [Asthma Hospitalizations](#)
- [Birth Defects](#)
- [Birth Outcomes](#)
- [Cancer Incidence](#)
- [Carbon Monoxide Poisoning](#)
- [Childhood Lead Poisoning](#)
- [Drinking Water](#)
- [Heart Attack Hospitalizations](#)
- [Heat Stress](#)


### Learn More

- [Environmental Public Health Tracking Home](#)
- [About Environmental Health, Tracking and Exposure](#)
- [Metadata Search](#)
- [Other Data](#)
- [Tracking Program](#)
- [Glossary](#)
- [Tracker "How To" Guide](#)
- [Frequently Asked Questions](#)

### Library

- [Community and Environmental Health Reports](#)
- [Health Advice on Eating Fish You Catch](#)
- [Publications](#)
- [Research and Surveillance Corner](#)

Revised: October 2014 [Disclaimer](#) | [Privacy Policy](#) | [Accessibility](#) | [Funding Acknowledgement](#)

 Agencies App Directory Counties Events  
Services

Available at: [https://apps.health.ny.gov/statistics/environmental/public\\_health\\_tracking/tracker/](https://apps.health.ny.gov/statistics/environmental/public_health_tracking/tracker/)





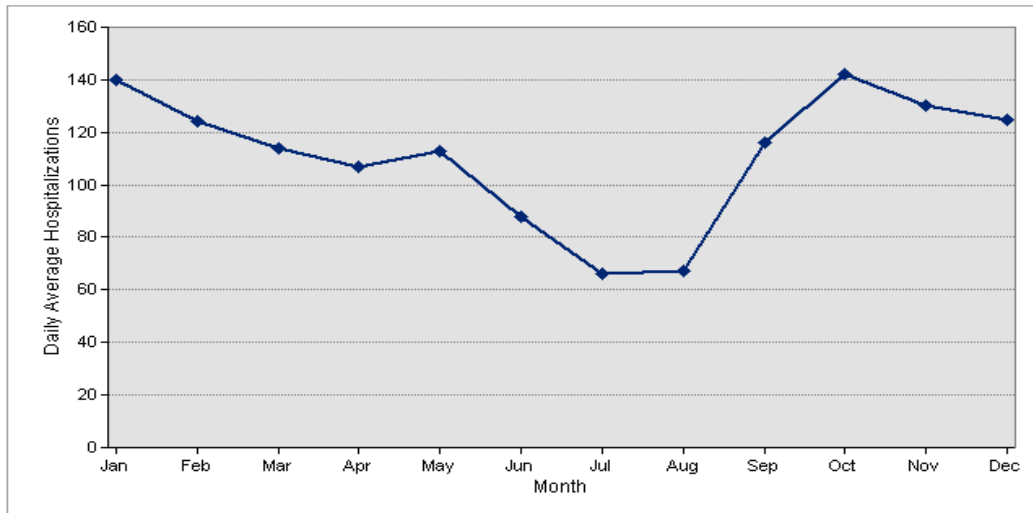
# Asthma Hospitalizations

Asthma hospitalization data identify a small percentage of people with asthma, those with the condition serious enough to require a hospital stay. Hospitalization data can be used to help identify people most in need of asthma prevention and care. Use this site to view the number and rate of asthma hospitalizations.

View by: **County** **Age** **Age and Sex** **Month**

Change Data Years:

Daily Average Asthma Hospitalizations by Month, New York State, 2000-2002



Asthma Daily Average Hospitalizations by Month, New York State, 2000-2002

Month	2000	2001	2002	2000-2002
Jan	145	126	150	140
Feb	122	120	130	124
Mar	106	124	112	114
Apr	105	114	103	107
May	106	124	110	113
Jun	96	85	83	88
Jul	64	64	69	66
Aug	68	71	63	67
Sep	129	105	114	116
Oct	145	139	141	142
Nov	127	129	135	130
Dec	121	127	128	125

## About Asthma

[About Asthma](#)

[About Data](#)

[Export Data](#)

[Other Asthma Data](#)

[Contact](#)

## Learn More

[Environmental Public Health Tracking Home](#)

[About Environmental Health, Tracking and Exposure](#)

[Metadata Search](#)

[Other Data](#)

[Tracking Program](#)

[Glossary](#)

[Tracker "How To" Guide](#)

[Frequently Asked Questions](#)



# Enhancing Surveillance Capacity

# Enhancing Surveillance Capacity: Improved Reporting to CMR

## Completeness of Reporting

Prevalence\* of selected major birth defects in New York State  
(Birth years: 2002-2004)

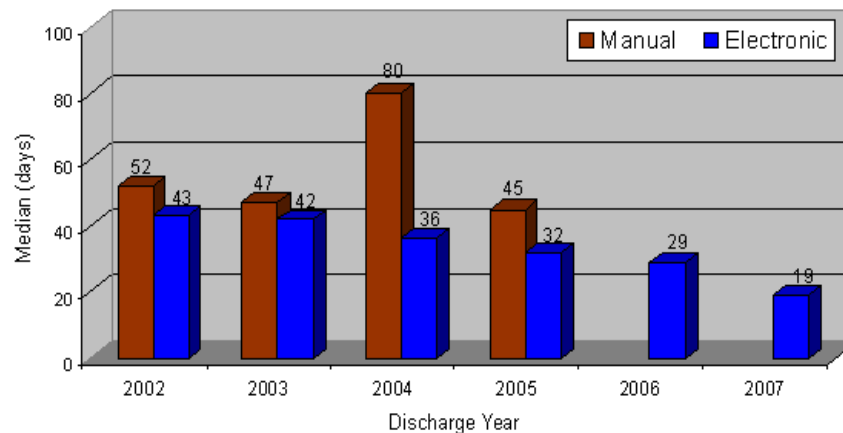
Birth defect Category	NY City	Upstate NY	NYS	NBDPN	95% CI Range
<b>Central nervous system defects</b>					
Anencephalus	0.4	0.4	0.4	2.5	2.3-2.7
Spina bifida without anencephalus	1.8	2.1	1.9	3.7	3.4-3.9
Encephalocele	0.3	0.7	0.5	0.9	0.8-1.0
<b>Eye defects</b>					
Anophthalmia/ microphthalmia	0.6	0.7	0.6	2.1	1.9-2.3
<b>Cardiovascular defects</b>					
Common truncus	0.9	0.3	0.6	0.8	0.7-0.9
Transposition of great arteries	4.0	4.9	4.5	4.7	4.5-5.0
Tetralogy of Fallot	4.7	4.7	4.7	3.9	3.8-4.2
Endocardial cushion defect	3.0	2.9	2.9	4.4	4.1-4.6
Hypoplastic left heart syndrome	2.2	2.6	2.4	2.4	2.2-2.6
<b>Orofacial defects</b>					
Cleft palate without cleft lip	4.5	6.4	5.5	6.4	6.1-6.7
Cleft lip with and without cleft palate	5.3	8.5	6.9	10.5	10.1-10.9
<b>Gastrointestinal defects</b>					
Esophageal atresia/ tracheoesophageal fistula	2.4	2.3	2.3	2.4	2.2-2.6
Rectal and large intestinal atresia/stenosis	4.2	4.7	4.5	4.8	4.5-5.1
<b>Musculoskeletal defects</b>					
Reduction deformity, upper limbs	1.3	2.2	1.8	3.8	3.5-4.0
Reduction deformity, lower limbs	0.7	1.1	0.9	1.9	1.7-2.1
Gastroschisis	1.5	2.2	1.9	3.7	3.5-4.0
Omphalocele	1.1	1.5	1.3	2.1	1.9-2.3
Diaphragmatic hernia	1.5	1.9	1.7	2.9	2.7-3.1
<b>Chromosomal defects</b>					
Trisomy 13	0.8	0.8	0.8	1.3	1.2-1.5
Down syndrome(trisomy 21)	11.3	13.2	12.3	13.7	13.2-14.1
Trisomy 18	1.0	1.2	1.1	2.4	2.2-2.6

\*- Prevalence (number of defects per 10,000 live births)

**Bold prevalences are within the range of the 11 active registries**

**Boxed prevalences are equal to or greater than the lower limit of the 95% CI range**

## Timeliness of Reporting



## Accuracy of Reporting

Table 2. The number of cases and the percent of unspecified codes for the selected birth defect category by case reporting systems, paper-based (manual) and web-based (HPN) reporting

Selected birth defect category	BPA codes (unspecified BPA codes)	Total	Cases with unspecified codes		% of cases with unspecified codes by reporting system		p-value
			N	%	Manual	HPN	
Other specified anomalies of heart	746.8, 746.9 (746.880, 746.900, 746.990)	1,228	329	26.8	32.9	17.6	<0.001
Other specified anomalies of pulmonary artery	747.3 (747.380, 747.390)	2,179	68	3.1	3.7	2.5	<0.05
Other obstructive defects of renal pelvis/ureter	753.2 (753.290)	4,299	353	8.2	12.7	3.5	<0.001
Total selected cases		7,706	750	9.7			

# Enhancing Surveillance Capacity: Geographic Aggregation Tool

- Increasing demand to produce local community health maps and detect unusual patterns of disease.
- Risk of disclosure of confidential information when showing small area data.
- Rates of disease can be unreliable due to small numbers.

# Enhancing Surveillance Capacity: Geographic Aggregation Tool

- Merges small areas with neighboring areas to provide more stable rates of disease and/or protect confidentiality
- User decides how much aggregation is needed
  - Based on cases and/or underlying population
  - Example 250 births and at least 3 low birth weight births

Download at: <http://www.albany.edu/faculty/ttalbot/GAT/>

For further information contact:  
Thomas Talbot at [thomas.talbot@health.ny.gov](mailto:thomas.talbot@health.ny.gov)





# Geographic Aggregation Tool

Original Census Block data†

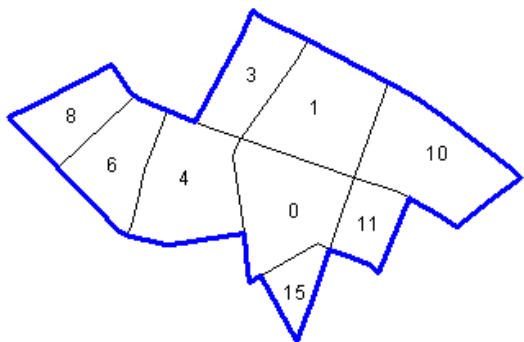
Block	Cases
122300/2004	10
122300/2005	11
014500/3005	3
014500/3007	4
014500/3008	0
014500/3009	1
014500/3010	15
103202/2001	8
103202/2002	6

GAT

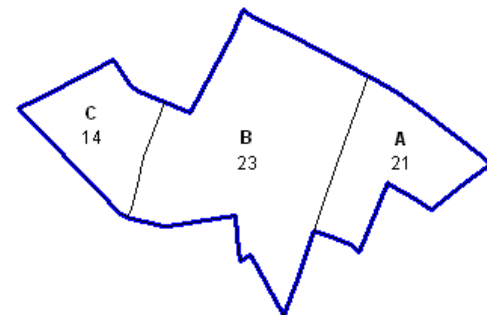


Regions

Block	Cases	Region
122300/2004	10	A
122300/2005	11	A
014500/3005	3	B
014500/3007	4	B
014500/3008	0	B
014500/3009	1	B
014500/3010	15	B
103202/2001	8	C
103202/2002	6	C

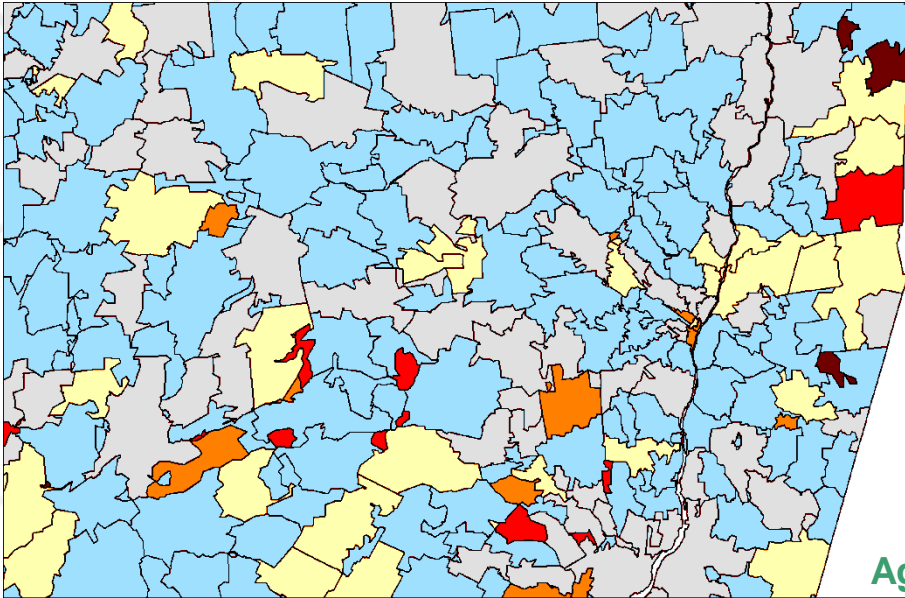


Cases	Region
21	A
23	B
14	C



† Simulated data

## Original ZIP Codes 3 Years Low Birth Weight Incidence Ratios

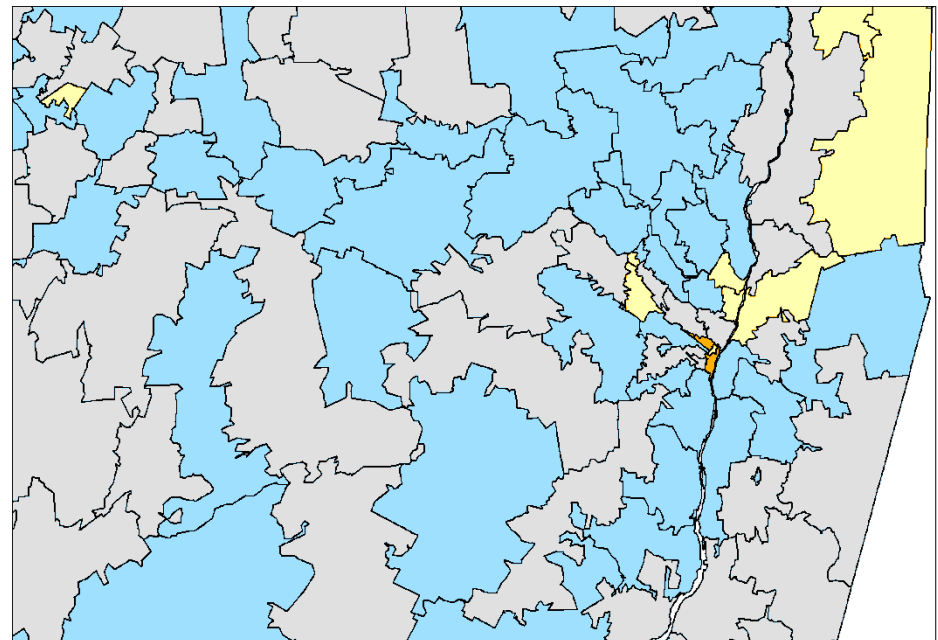


# Geographic Aggregation Tool: Results

Aggregated to 250 Births per ZIP Code Group

### Low Birth Weight Incidence Ratio of Observed to Expected

■	3 to 16.7	(20)
■	2 to 3	(27)
■	1.6 to 2	(72)
■	1.2 to 1.6	(206)
■	0.8 to 1.2	(458)
■	0 to 0.8	(815)



# Geographic Aggregation Tool Requirements

- Works with various levels of geography
  - Census blocks, tracts, towns, ZIP codes etc
  - Can nest one level of geography in another
    - Ex., Census tracts are aggregated. Aggregated areas do not cross county boundaries
- Uses open source free software (R)
- Outputs results for use in mapping programs
  - GIS Programs (MapInfo, ArcMap)
  - Free online mapping apps (Google Maps, IndieMapper)

# Enhancing Surveillance Capacity: Data Linkage and Visualization

Environmental Facilities and Cancer Map - Mozilla Firefox

File Edit View History Bookmarks Tools Help

CDC - EPHT Program: CDC-Funded EPHT ... Environmental Facilities and Cancer Map

Back Forward [https://apps.nyhealth.gov/statistics/cancer/environmental\\_facilities/mapping/map/](https://apps.nyhealth.gov/statistics/cancer/environmental_facilities/mapping/map/) Reload Stop nysdoh cancer mapping . Home

New York State State Agencies Search all of NY.gov

Department of Health skip to main content  
Information for a Healthy New York A-Z Index En Español Help Contact Home

You are Here: [Home Page](#) > [Cancer Data and Statistics](#) > [Environmental Facilities and Cancer Mapping](#) > Environmental Facilities and Cancer Map

Hide/Show Table of Contents Help

Environmental Facilities and Cancer Map

Map Satellite

Search

Address Environmental Facility

Address: Find

Layers

- Chemical Bulk Storage
- Major Oil Storage Facilities
- Petroleum Bulk Storage
- Air Emission Sources
- Environmental Restoration Sites
- Brownfield Sites
- State Superfund Sites
- Voluntary Cleanup Sites
- Water Discharge Sites
- Active Solid Waste Sites
- Corrective Action Sites
- Commercial Pesticide Sellers
- Hazardous Waste Generators

Map data ©2013 Google - Terms of Use Report a map error

Lat,Lng : 40.6439,-73.984

Revised: January 2013 [Disclaimer](#) | [Privacy Policy](#) | [Accessibility](#)

Questions or comments: [canmap@health.state.ny.us](mailto:canmap@health.state.ny.us)

Available at: [http://www.health.ny.gov/statistics/cancer/environmental\\_facilities/mapping/](http://www.health.ny.gov/statistics/cancer/environmental_facilities/mapping/)





# Enhancing Surveillance Capacity: Messaging with Cancer Mapping

## Environmental Facilities and Cancer Mapping

The New York State Environmental Facilities and Cancer Mapping project is designed to present information about cancer cases in the State as well as the location of environmental facilities. Cancer is a very common disease. One of every two men and one of every three women will be diagnosed with cancer at some time in their lives.

The Environmental Facilities and Cancer Map shows:

- The number of people diagnosed with cancer (cancer counts, 2005-2009) in small geographic areas of New York State
- Highlighted areas where cancer is higher or lower than expected
- The locations of certain environmental facilities.

Links to more information about cancer and how to interpret cancer data are also provided.

### Important Information

#### About Cancer Risk

**Cancer risk is primarily based on individual risk factors.** Research suggests that at least 40% of all cancers are due to lifestyle factors such as tobacco use, diet, physical inactivity, and alcohol use. Other important individual risk factors are age, workplace exposures, family history and personal medical history, including radiation exposure and infections. Individual risk factors affect people over their lifetimes, and when people move, they carry their individual risks with them.

**Cancer is a very common disease.** In New York State, one out of every two men, and one of every three women, will be diagnosed with cancer at some time in their lives.

**There are actions you can take to reduce your risk of getting cancer.** Changing your lifestyle by quitting smoking, eating a healthy diet, maintaining a healthy weight, limiting alcohol use and exercising regularly may significantly reduce your risk. Additional information on reducing risk for specific types of cancer is available at [Learn More About Different Types of Cancers](#).

**Talk with your health care provider about recommended cancer screenings.** Getting screening tests regularly may find certain cancers early, when treatment is likely to work best.

#### About Cancer Maps

The map **cannot explain why** cancer may be higher or lower in certain areas. It does not show that an environmental facility causes cancer.

- **The map does not contain any information about important known individual risk factors for cancer.** These include factors such as tobacco use, alcohol use, family history, radiation exposure, medical history, workplace exposures, infections, diet, sunlight, and physical activity, which are known to play important roles in cancer.
- **The environmental facility information only shows the locations of facilities.** It does not contain any information about whether chemicals are released from these facilities or the likelihood that people may have been exposed to any chemicals that could cause cancer.
- **The cancer information reflects people's addresses at the time of their cancer diagnoses.** It is possible that people with cancer lived elsewhere before their diagnoses. This is important because cancer can take many years (5 to 40 years) to develop. This is referred to as cancer latency. People's exposures earlier in life, at a different address, may have contributed to their cancer. People also take their personal risk factors with them when they move from place to place.
- **The map shows only one five-year time period of cancer information.** Experience with cancer mapping shows that changing the specific timeframe selected can change areas that are highlighted as higher or lower than expected.

### Understanding the Map

- [About the Data](#)
- [Using the Map](#)
- [Frequently Asked Questions](#)
- [Learn More About Different Types of Cancers](#)
- [Learn More About Different Types of Environmental Facilities](#)
- [Chronic Disease Teaching Tools](#)

# Enhancing Surveillance Capacity: Messaging with Cancer Mapping

STATE Services News Government

Department of Health  
Information for a Healthy New York

skip to main content  
A-Z Index En Español Help Contact Home

You are Here: [Home Page](#) > [Cancer Data and Statistics](#) > [Environmental Facilities and Cancer Mapping](#) > Environmental Facilities and Cancer Map

Hide/Show Table of Contents Help

Search

Address: Environmental Facility

Address:  Find

Layers

- Chemical Bulk Storage Facilities
- Major Oil Storage Facilities
- Petroleum Bulk Storage Facilities
- Air Emission Sources
- Environmental Restoration Sites
- Brownfield Sites
- State Superfund Sites
- Voluntary Cleanup Sites
- Water Discharge Sites
- Active Solid Waste Sites
- Corrective Action Sites
- Commercial Pesticide Sellers
- Hazardous Waste Generators
- Vehicle Dismantlers
- Hazardous Waste Management Facility
- ZIP Codes
- Counties
- Five-Year Cancer Counts

**Cancer Highlighted Areas**

Above expected  Below expected

<input type="checkbox"/> Bladder	<input type="checkbox"/> Brain	<input type="checkbox"/> Breast
<input type="checkbox"/> Colorectal	<input type="checkbox"/> Esophagus	<input type="checkbox"/> Kidney
<input type="checkbox"/> Larynx	<input type="checkbox"/> Leukemia	<input type="checkbox"/> Liver
<input checked="" type="checkbox"/> Lung	<input type="checkbox"/> Mesothelioma	<input type="checkbox"/> NHL
<input type="checkbox"/> Oral	<input type="checkbox"/> Ovary	<input type="checkbox"/> Pancreas
<input type="checkbox"/> Prostate	<input type="checkbox"/> Stomach	<input type="checkbox"/> Testis
<input type="checkbox"/> Thyroid	<input type="checkbox"/> Uterus	

**About Cancer Risk**

**Cancer risk is primarily based on individual risk factors.** Research suggests that at least 40% of all cancers are due to lifestyle factors such as tobacco use, diet, physical inactivity, and alcohol use. Other important individual risk factors are age, workplace exposures, family history and personal medical history, including radiation exposure and infections. Individual risk factors affect people over their lifetime, and when people move, they carry their individual risks with them.

**Cancer is a very common disease.** In New York State, one out of every two men, and one of every three women, will be diagnosed with cancer at some time in their lives.

**There are actions you can take to reduce your risk of getting cancer.** Changing your lifestyle by quitting smoking, eating a healthy diet, maintaining a healthy weight, limiting alcohol use and exercising regularly may significantly reduce your risk. Additional information on reducing risk for specific types of cancer is available at [Learn More About Different Types of Cancers](#).

**Talk with your health care provider about recommended cancer screenings.** Getting [screening](#) tests regularly may find certain cancers early, when treatment is likely to work best.

Map data ©2015 Google 50 km Terms of Use Report a map error  
Lat,Lng : 40.8471,-76.0803

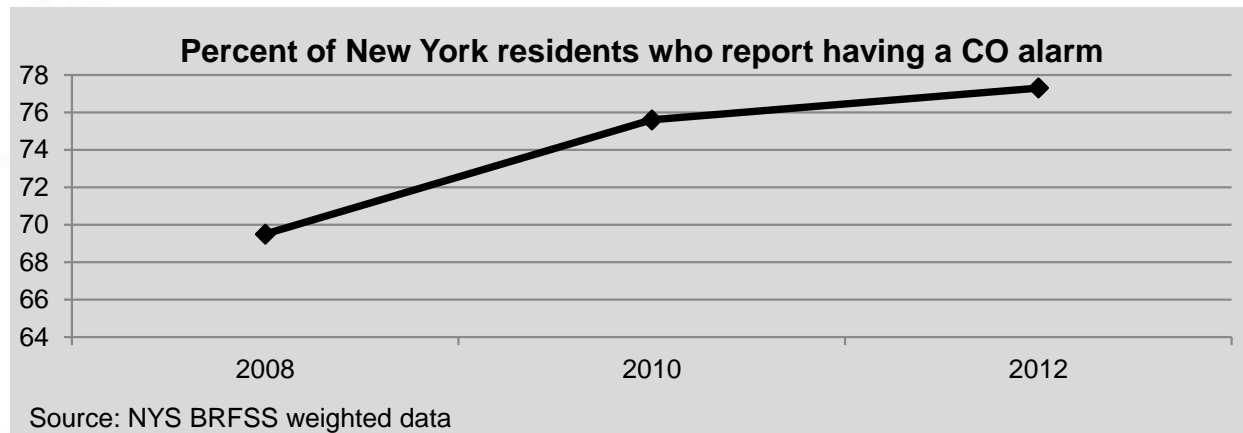
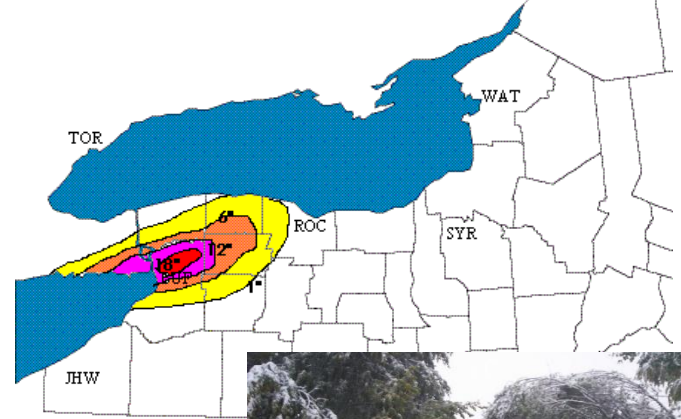




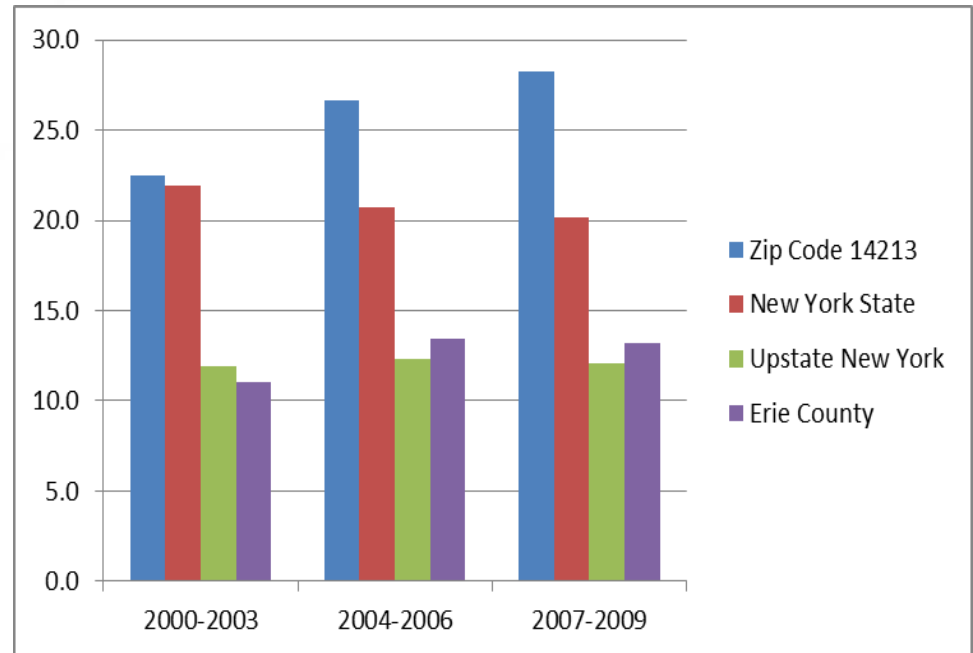
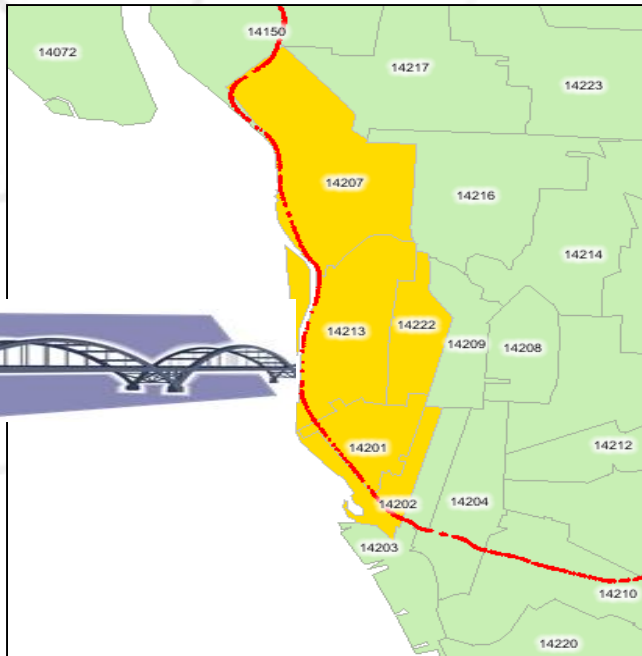
# Public health actions

# Winter Storm “Aphid”

- October 2006 winter storm resulted in extensive power outages
- Partnership with DOH programs with real-time hospital data suggested increase in CO poisonings
- Provided basis for rapid implementation of study
  - Assess impact of poisoning and better understand public CO poisoning awareness and prevention
  - Evaluate environmental factors



# Public Health Actions: Peace Bridge



**Table. Asthma hospitalization rates in 14213 and surrounding ZIPs compared to Erie, Upstate NYS, and all NYS.**

ZIP Code	Hospitalizations			Rate per 10,000 population		
	2000-2003	2004-2006	2007-2009	2000-2003	2004-2006	2007-2009
14201	161	133	132	30.5	34.2	35.5
14202	17	25	21	11.1	20.7	17.8
14207	193	171	186	21.0	25.2	28.1
14213	253	219	220	22.5	26.6	28.3
14222	43	41	38	8.3	10.7	10.2

NYS	167,543	120,385	117,567	21.9	20.7	20.1
Upstate NYS	52,683	41,042	40,339	11.9	12.3	12.1
Erie County	4,159	3,707	3,613	11.0	13.4	13.2

# “Brownfields” Redevelopment

- Partnership with staff funded by ATSDR
- Enhance built environment and build community interaction
- Provide community indicator data
  - Enhance community awareness on key health outcomes of interest/concern
  - Support additional grant opportunities
- Assist in EH outreach and education message





# Community Investigations

- DOH staff are frequently involved in investigations to respond to community concerns
- Results summarized in public health assessments/consultations and other reports, fact sheets, etc.
- Historically, available in paper copy and electronically
  - Not always easy to access
- EPHT staff developed mapping application to provide community level access to community investigations



# Community and Environmental Health Reports

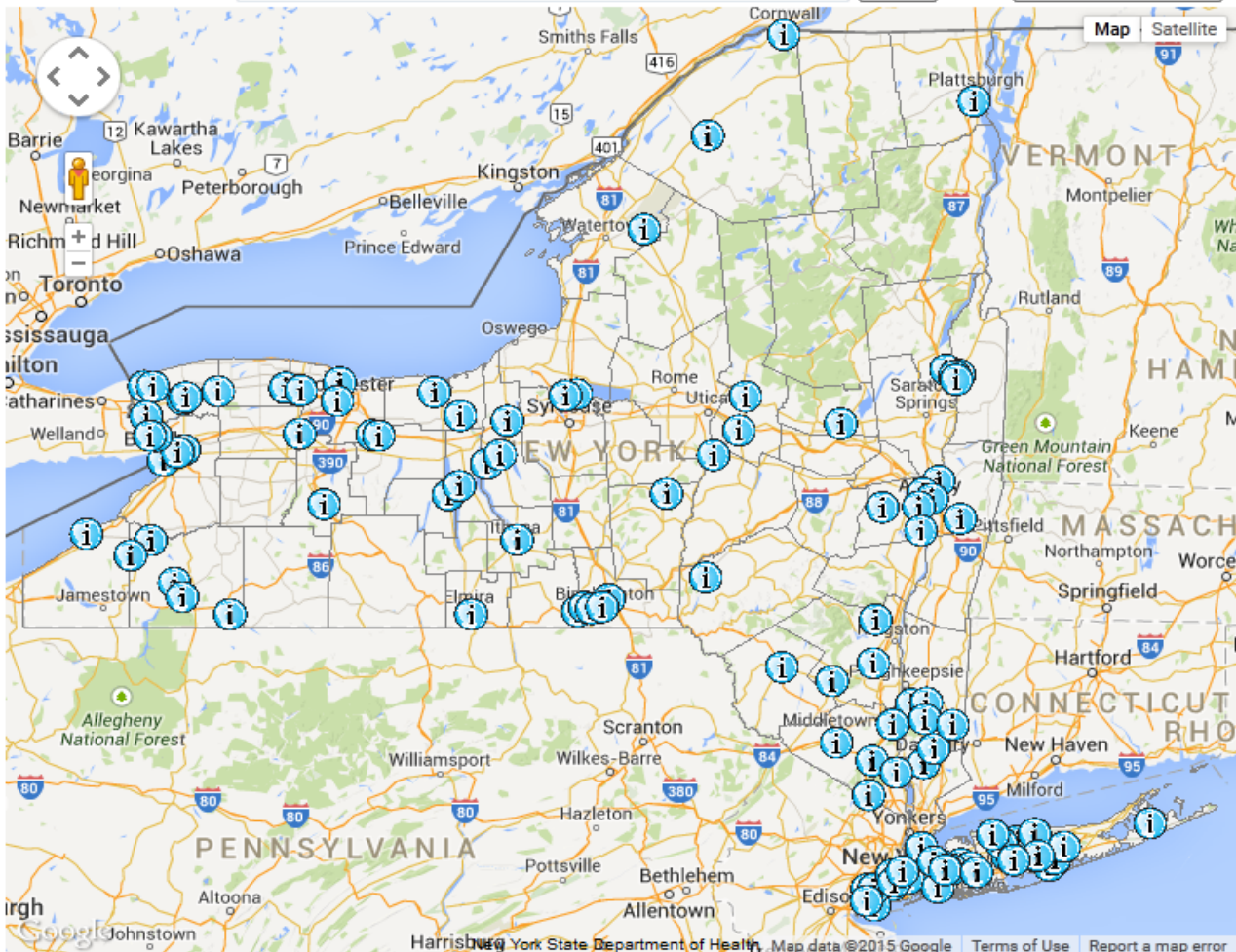
This map shows locations where DOH conducted certain environmental health investigations in New York State. Click on the map symbols to view links to the full reports or the list tab to view a list of reports by county.

View by: **Map** List

Find Address/Report:

Find

Zoom to NY State



## About Reports

[About Reports](#)

[How to Find Reports](#)

[More Information](#)

[Contact](#)

## Learn More

[Environmental Public Health Tracking Home](#)

[About Environmental Health, Tracking and Exposure](#)

[Metadata Search](#)

[Other Data](#)

[Tracking Program](#)

[Glossary](#)

[Tracker "How To" Guide](#)

[Frequently Asked Questions](#)







# Community and Environmental Health Reports

This map shows locations where DOH conducted certain environmental health investigations in New York State. Click on the map symbols to view links to the full reports or the list tab to view a list of reports by county.

View by: **Map** List

Find Address/Report:  Find Zoom to NY State

Report	Year	Fact Sheet
<a href="#">Love Canal Follow-up Health Study - Background Community Report</a>	2011	-
<a href="#">Love Canal Follow-up Health Study - Mortality Community Report</a>	2011	-
<a href="#">Love Canal Follow-up Health Study - Reproductive Outcomes Community Report</a>	2011	-
<a href="#">Love Canal Follow-up Health Study - Blood Serum Investigation Community Report</a>	2010	-
<a href="#">Love Canal Follow-up Health Study - Cancer Study Community Report</a>	2009	-
<a href="#">Love Canal Follow-up Health Study</a>	2008	-

Google | Erie | Jamestown | Buffalo | Niagara Falls | Rochester | Geneva | Corning | Elmira

New York State Department of Health | Map data ©2015 Google | Terms of Use | Report a map error

## About Reports

- [About Reports](#)
- [How to Find Reports](#)
- [More Information](#)
- [Contact](#)

## Learn More

- [Environmental Public Health Tracking Home](#)
- [About Environmental Health, Tracking and Exposure](#)
- [Metadata Search](#)
- [Other Data](#)
- [Tracking Program](#)
- [Glossary](#)
- [Tracker "How To" Guide](#)
- [Frequently Asked Questions](#)



# Lead Poisoning Prevention

- Partnership between NYSDOH EPHT and Lead programs
- Geocoding addresses of children with blood lead levels  $> 10 \mu\text{g/dL}$
- Provide role-based access to local health departments

# Partnerships and Collaborations

# Collaborations

- Project with Harvard to improve space-time clustering software (SaTScan) and provide training
- Collaborating with NYS, NYC and FL EPHT/BRACE and NASA researchers from Marshall Space Flight Center (AL) to evaluating heat stress indicators and develop heat vulnerability maps
- Collaborating with CSTE, CDC and several states to develop fine-scale estimates of life expectancy
- EPHT sub-county data project

# Future Directions

- More community level data
- Enhanced data linkage
- Improved tools to enable data visualization while remaining within regulatory guidelines

# The End

